



# Remote & Isolated Children's Exercise Inc.

## 2023 AGM



# About Us

The Remote & Isolated Children's Exercise Inc. (RICE) was established in 1976 in response to the difficulties and lack of services faced by geographically isolated families with children aged up to 12 years.

RICE is a unique mobile children's service offering a range of education and care services to families living in remote towns, communities and stations in South Australia. Based in Port Augusta, RICE covers an area of approximately 650,000 square kilometres, travelling by 4WD vehicles to visit families and communities.





# Values

**Community - Respect - Authentic - Diversity**

## Vision

Our vision is to foster a vibrant and successful early years service for outback children.

## Mission

Our mission is to ensure children and families in Outback South Australia have access to quality early years services, including education and childcare, that are not readily available due to geographical location.

# Strategic plan

2022-2025

**01** Enhance the  
Governance

**03** Improve financial  
management

Boost community  
engagement **02**

Enhance  
operations **04**



It's hard to believe I am sitting down to write a reflection about 2023 when it feels as though it only started last week.

2023 saw big changes for the RICE Board of Management, with all executive positions filled by members who had not undertaken such duties before after the departure of some longstanding members at last years AGM. It has been a learning experience for us all as a board and individually, but I am so proud to be a part of the decisions and growth that have happened over the last 12 months.

The biggest decision, one that has taken the majority of the year, is bringing RICE's finances back in house and making the transition from MYOB to Xero. RICE has outsourced accounting and payroll for a number of years. Thanks to the dedication of Abbie to her studies and confidence in her abilities we have been able to return all the finances in house - with support from Rowe Partners, Port Augusta during the transition period. This has been a big undertaking by all administration staff, and I thank Abbie and Chloe, with the support of Cristina, for making this happen. It was no small feat and your constant belief in making RICE greater has not gone unnoticed.

RICE's weekly creche services in both Orroroo and Hawker have continued successfully throughout the year and the communities continuing to embrace the services is a reflection of the staff's ongoing dedication to provide a safe and educational environment for the children who utilise the services.

The preschool program has had to adapt this year with the reintroduction of a mid-year intake. Thank you to our preschool teacher Tania for working through this and I noticed some very happy faces at both the Kindy Experience week as well as the mid-year induction. Having the opportunity for face-to-face experiences to happen is invaluable. While our space may be small in Port Augusta, the staff have done such a fantastic job of adapting it to host these events and it is such a welcoming and friendly environment.

We thank OZ Minerals/BHP for their ongoing support of the Activity Day program which allows this program to continue to operate at events throughout the year. We are honoured they have committed to this for another period of 2 years allowing forward planning to occur.

RICE continues to receive funding from the State and Commonwealth government which keep our programs running and for that we are very thankful; but it is also the generous donations that are received from the various Clubs throughout the year that help fill the gaps in programs and resources which funding does not cover.

The board continues to meet monthly, and we have had the opportunity to meet in Port Augusta twice this year and undertake some very informative financial training. I thank all the board members for their commitment and efforts this year - I would not have been able to make it so successfully through my first year as Chairperson without such a supportive board.

**ANNA NUNN**  
Chairperson

# Annual Report 2023

## Chairperson

# Annual Report 2023

## Director

2023 has been a hugely productive year for the team at RICE. We have faced significant organisational change, staff changeover and the continued battles within the childcare industry. We have contributed to the Royal Commission into Childcare, the Productivity Commission on Early Childhood Education & Care Inquiry and a number of RDA branches in support of our members and the industry.

Whilst our advocacy may be a small part of the bigger picture, we hope that it can bring some much-needed change to the industry and most importantly, our members.

RICE continues to be well supported by committee's right across South Australia, which we are forever grateful for. Unfortunately, due to staffing we were unable to attend all of our bookings, but we thank the committees for their support & understanding and we look forward to attending in 2024.

2023 also saw BHP lock in long term sponsorship for our Activity Day program. With the cost of living increasing, their generous sponsorship contributes towards the many costs associated with the long-distance travel for this program. We are extremely grateful for this partnership and look forward to delivering the program in the years to come.

The Hawker & Orroroo Creche continue to be well utilised, with Orroroo consistently having a waitlist. It is great to see the program being thoroughly enjoyed and supported by families in both regions.

Tania has been busy travelling across the state to visit our preschool children. This year saw our first mid-year intake for preschool, with 5 children joining Tania in Term 3. We will excitedly celebrate the graduation of 3 children in December, ready to transition to Reception in 2024.

2023 has seen Adele create great foundations within the Wellbeing Program. With her "Staying Connected" activities being enjoyed by many of our members, she has also developed relationships not only with our members but bridging that gap between RICE and our stakeholders.

RICE staff were privileged with the opportunity to attend the 2023 Early Childhood Australia Conference at the Adelaide Convention Centre in October. This trip was a wonderful opportunity to further expand our knowledge on a variety of different subjects, as well as enjoy time together as team.

In early November, I was involved in the national CCCFR funding review. We were fortunate enough for the reviewer to attend onsite at our office, to be able to share our space and show the resources that we have available to our members. They will be seeking feedback from families and we look forward to sharing how you can be involved in this review.

At the 2022 AGM, we saw a number of changes within our Board of Management. This transition has built a stronger relationship between the RICE office and the Board. This has helped aid the organisational change both in the office and throughout the Board.

As we begin to wind up 2023, I would like to thank everyone for their continued support and involvement with RICE and we look forward to continuing to work together in 2024.

**CHLOE HUNTER**  
**Director**

# Financial Reports

July 2022 - June 2023

## Remote and Isolated Children's Exercise Incorporated

### Statement of Profit or Loss and Other Comprehensive Income For the year ended 30 June 2023

	Note	2023	2022
		\$	\$
Grant Income		904,260	906,784
Childcare Income		84,071	70,388
Donations		10,088	11,433
Other Income		34,124	17,352
<b>Total Income</b>		<b>1,032,543</b>	<b>1,005,957</b>
Employee benefits expense		(720,657)	(534,803)
Administration expense		(123,651)	(110,956)
Program expenses		(70,476)	(72,629)
Other expenses		(84,756)	(73,705)
<b>Total expenses</b>		<b>(999,540)</b>	<b>(792,094)</b>
Surplus / (Deficit)		33,003	213,863
Other comprehensive income		-	-
<b>Total comprehensive income for the year</b>		<b>33,003</b>	<b>213,863</b>

## Remote and Isolated Children's Exercise Incorporated

### Statement of Cash Flows For the year ended 30 June 2023

	Note	2023	2022
		\$	\$
<b>Cash Flows from Operating Activities</b>			
Receipts from operations		1,015,742	1,012,089
Payments to suppliers & employees		(916,711)	(689,363)
Interest received		10,586	117
Interest paid		(7,260)	(9,607)
<b>Net cash provided by (used in) operating activities</b>	10	<b>102,357</b>	<b>313,236</b>
<b>Cash Flows from Investing Activities</b>			
Purchase of property, plant & equipment		(24,853)	(21,220)
<b>Net cash provided by (used in) investing activities</b>		<b>(24,853)</b>	<b>(21,220)</b>
<b>Cash Flows from Financing Activities</b>			
Payments of loans		(37,530)	(33,085)
<b>Net cash provided by (used in) financing activities</b>		<b>(37,530)</b>	<b>(33,085)</b>
<b>Net increase/(decrease) in cash held</b>		<b>39,974</b>	<b>258,931</b>
<b>Cash at beginning of the year</b>		<b>1,415,104</b>	<b>1,156,173</b>
<b>Cash at end of the year</b>	2	<b>1,455,078</b>	<b>1,415,104</b>

# Financial Reports

## Remote and Isolated Children's Exercise Incorporated

### Statement of Changes in Equity For the year ended 30 June 2023

	Accumulated Surplus \$	Reserve \$	Total \$
<b>2023</b>			
Balance at 1 July 2022	1,247,166	201,386	1,448,552
Transfer of Reserve to Accumulated Surplus	201,386	(201,386)	-
Result for the year	33,003	-	33,003
Balance at 30 June 2023	<u>1,481,555</u>	<u>-</u>	<u>1,481,555</u>
<b>2022</b>			
Balance at 1 July 2021	1,033,303	201,386	1,234,689
Result for the year	213,863	-	213,863
Balance at 30 June 2022	<u>1,247,166</u>	<u>201,386</u>	<u>1,448,552</u>

## Remote and Isolated Children's Exercise Incorporated

### Statement of Financial Position As At 30 June 2023

	Note	2023 \$	2022 \$
<b>Current assets</b>			
Cash and cash equivalents	2	1,455,078	1,415,104
Trade and other receivables	3	11,627	5,412
Other current assets	4	348	1,033
<b>Total Current Assets</b>		<u>1,467,053</u>	<u>1,421,549</u>
<b>Non-current assets</b>			
Property, plant and equipment	5	268,084	276,128
<b>Total Non-Current Assets</b>		<u>268,084</u>	<u>276,128</u>
<b>TOTAL ASSETS</b>		<u>1,735,137</u>	<u>1,697,677</u>
<b>Current liabilities</b>			
Trade and other payables	6	119,225	99,428
Financial Liabilities	7	99,572	137,102
Provisions	8	14,027	11,522
<b>Total Current Liabilities</b>		<u>232,824</u>	<u>248,052</u>
<b>Non-current assets</b>			
Provisions	8	20,758	1,073
<b>Total Current Liabilities</b>		<u>20,758</u>	<u>1,073</u>
<b>TOTAL LIABILITIES</b>		<u>253,582</u>	<u>249,125</u>
<b>NET ASSETS</b>		<u>1,481,555</u>	<u>1,448,552</u>
<b>EQUITY</b>			
Accumulated Surplus		1,481,555	1,247,166
Reserves		-	201,386
		<u>1,481,555</u>	<u>1,448,552</u>



# Financial Reports

## Remote and Isolated Children's Exercise Incorporated


### Statement by the Board of Management

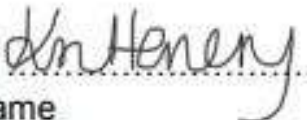
The board has determined that the association is not a reporting entity. The board has determined that this special purpose financial report should be prepared in accordance with the accounting policies outlined in Note 1 to the financial statements.

In the opinion of the board:

- 1 The financial statements and notes, as set out on pages 1 to 9, comply with nominated Australian Accounting Standards and give a true and fair view of the financial position of the registered entity as at 30 June 2023 and of its financial performance for the year ended on that date
- 2 This declaration is signed in accordance with subs 60.15(2) of the Australian Charities and Not-for-profits Commission Regulation 2013
- 3 There are reasonable grounds to believe that the registered entity is able to pay all of its debts, as and when they become due and payable.

This statement is made in accordance with a resolution of the board and is signed for and on behalf of the board by:

  
Chairperson .....  
Name

  
Treasurer .....  
Name

Dated this 31<sup>st</sup> day of August 2023

# Preschool Program

Preschool began with four children in Term 1, 2023 with five more enrolling for the first mid-year intake offered by the Education Department of South Australia. Recently we have had three children enrol into the pre-entry program for Term 4. Attendance is recorded through NGPDS data collection.

Preschool is a play-based program of 15 hours a week guided by a new Department of Education document which encompasses the Early Years Learning Framework; Numeracy and Literacy Indicators; Keeping Safe: Child Protection; and Reflect Respect Relate. Families implement the program with the guidance of an Early Childhood Teacher. Preschool is about laying foundations for a positive transition to school and providing opportunity to develop lifelong learning skills. Having strong core muscles through gross motor activities enables a child to sit at a desk for longer periods of time once in school. Fine motor play ensures children have the muscle capacity to hold a pen with confidence. Independence and emotional regulation activities ensure a child can persist when challenged by difficult tasks. Challenges are many and families can find it difficult being the ones implementing the 15 hours. It is important to mention skills learnt in preschool are ultimately lifelong and the holistic approach in learning is invaluable to a successful formal educational journey.

The program supports children with 3 WebEx sessions a week, increasing to 4 in their final term. The demands of working with four-year-old children being focused online can be hard for families when they wear so many different hats in a day's work. Encouraging families to be aware of the importance of their role in their child's educational journey has been challenging and something that is continually evolving. Children have had opportunity to attend face-to-face events and all children have received home visits which is a pivotal element of the program. Participation and attendance have been very good this year.

The program is working towards becoming more aligned with SOTA's face-to-face events, enabling families to travel once for educational events rather than having the financial burden of travelling twice. A connection with the Reception teacher has been established ensuring a smooth transition into school. A new direction has begun to engage and connect families with a variety of stakeholders, starting with a coffee catch up held at Arid Lands which proved very successful and worth becoming an annual event. SOTA, RFDS, Revise, Department for Education and South Australian Arid Lands Landscape Board were all invited. Additionally, a new WebEx session 'story time' has begun this term which includes Marree, Hawker, and Leigh Creek preschools to build and strengthen connections with other remote and isolated preschool children.

Professional development undertaken by the Preschool Teacher during 2023 included attendance of a single day at the Early Childhood Australia National Conference; Marte Meo (final session being held as a full day in Adelaide in Term 1, 2024); First Aid; 4WD training and Brain Gym. Professional connection was made with Port Hedland SOTA, which has led to Renee starting an online Playgroup, as well as with the Directors of Marree, Leigh Creek and Hawker preschools plus DPD sessions with Fiona Faulks at Augusta Park Childhood Service Centre.

**TANIA GEORGE**  
Preschool Teacher





I'm excited to share what a jam-packed year the Wellbeing Program has had! This program, particularly in the last 12 months, and since I commenced (nearing 2 years - in February 2024) has really started to complement the other RICE Programs as we work hand in hand with our families and service providers.

A key role of the program is collaboration - whether this be 1:1 support with individual families; in conjunction with the Preschool Program and Creche; joint collaboration with key stakeholders and community partners e.g., RFDS, NDIS, Community Health and Allied Health or other Not for Profit agencies, we work together for the desired outcome of our members. Some of these projects have included:

- Collaboration at Playdays
- Joint home visits, client support and input
- Cross agency referrals
- Networking at community events
- Service provider networking at the RICE office or at other agencies offices
- Through our promotional items

Some of the specific Wellbeing activities to keep our members connected to their community and the RICE community included:

- Visits to Orreroo and Hawker creches from the Mobile Junk Man; Australian Bush Buddies; the police and dentist
- I have visited Woomera, Nonning, Wilmington, Hawker and Oodnadatta, just to name a few, and been involved in Kindy Experience weeks and Preschool visits
- Attendance at the ICPA Conference in Woomera, Arid Lands Coffee Catch up with service providers, members and RICE staff and the Flinders Family Fun Day (Leigh Creek)
- Arranged member activities: Ricey Roo the Blue Kangaroo, Egg Heads, Self-Care Packs for Mums, Useful Contact Number guide, Father's Day and You've got Mail - Post Cards
- Appreciation posts for our Educators and Teacher for World Educators Day and World Teachers Day

I have also been fortunate enough to attend the following conferences and training this last 12 months for personal growth and development but also to build on the program, these include:

- Mental Health First Aid Training delivered by the RFDS
- Autism Inspirations
- Healthy Workplace Wellbeing Webinar
- Early Childhood Australia (ECA) National Conference

Heading into the next 12 months I look forward to working with our educators to bring some Wellbeing activities to the Online Playdays.

**ADELE BROADBRIDGE**  
Wellbeing Officer



# Play Days

Playdays have been on an upwards trajectory this year with a lot of hard work from staff to make this program thrive. During 2023 we have planned and facilitated 23 Playdays across the state with a focus on advertising and making them as accessible to families as possible. 139 children have participated in Playdays this year, including children who have attended several times; this is almost double on last year.

As the year has passed, more and more families have learned about how they can get involved in Playdays and have begun requesting more visits. We have also had a handful of new families join RICE as members just to gain access to the program as well as the Resource Centre. With the help of Adele and Cristina, we have been able to share information about Playdays through flyers that are sent to all new members and families that are interested in the program. Being able to share with members what to expect has been especially valuable in encouraging participation.

The past couple of months have been particularly exciting as we have expanded the program to include online sessions. RICE is now offering an online Playday every Tuesday during the school term. This part of the program is still in the preliminary stages, but we are already seeing more families get involved. With feedback from our members and the board, we are now sending links for online sessions to all RICE members with the option to “opt-in” to receive activity packs related to each session. These packs include a small collection of craft materials to use that families may not have at home. Families have the option to access the live session or watch a play-back if they can’t attend the scheduled time. As the online Playdays continue, I will send out a request for some further feedback from participants. We are also in the process of establishing a private Facebook group for families to share images, thoughts and questions related to the online sessions. This will be a great platform for parents to network with one another and learn from each other, which is invaluable for our remote families.

Over the past several months, we have been looking to make the Playday program more efficient where possible. Instead of making a long trip to visit one family, we have been trying to coordinate trips in with other Playdays or events. This will help both with staff wellbeing and to make the program more cost effective.

Playdays have come a long way this year and it is wonderful to see and be involved in. We have seen more families keen to host and have been able to visit Wintinna, Cowarie, Mulgathing, Wilgena, Callanna and Mt Sarah among others. We look forward to even more progress in the coming months and into 2024.

**RENEE BELL**  
PlayDay Educator





The Resource Centre has been busy again in 2023 with continuous changes being made throughout the year.

A lot of work went into improving the Pre-entry, STEM 1 and STEM 2 boxes - adding new resources that aid in a child's learning and experiences. Our new book packs cover a larger variety of subjects and, with additional books still arriving daily, I hope that families enjoy reading them with their children. Throughout the year Tania (*preschool teacher*) and I have implemented positive changes to the Resource Centre by finding new ways to improve children's learning every day.

Toy boxes have been a massive hit this past year - I have had over 20 boxes sent out to families to date and each box has resulted in a positive experience and families have continued to request them for their children throughout the year. I really do try and change the design each and every time a box goes out, forever providing new experiences for children and their families.

I will be sending out an email shortly, explaining to families about the end of year stocktake process and the expectation for everything to be returned from families. I would like everything accounted for before leaving on Christmas break. Taz and I have been busy finalising the "Borrowing and Resource" policy and hopefully this will be implemented in 2024 for membership renewals.

**TEAGAN KARGER**  
Resource Educator





We began the year with 20x Activity Day bookings (a little less compared to 2022 when we were very busy and out most weekends). Unfortunately, as the year progressed staff were only able to make it 10 events, with our final event for the year being at the Carrieton Gymkhana and Motokhana on November 11th. We appreciate the understanding of the various committees and we look forward to being able to attend more events in 2024.

The addition of our new trailer has been very helpful for Activity Days, with its first trip to the Quorn Races. The trailer is handy in being able to carry larger resources which we have been unable to transport in the past. You can expect to see it on the road heading to many more events in the future!

This year I have encouraged committees & event holders again to make a donation towards our Activity Days rather than having staff asking individual families for on the day.

This has been well received and we thank them for their generous contributions.

We are also very grateful for the 3-year commitment from BHP in sponsoring the Activity Day program, ensuring we are able to continue to offer this service.

We are already receiving bookings for 2024 and we can't wait to be out & about delivering the Activity Day program!

**TEAGAN KARGER**  
Resource Educator

# Activity Days

# Creche

This year at creche has flown by - we have had a busy year, our Orroroo creche is at capacity with 19 children on our books and Hawker has been consistent with around 16 children enrolled here.

We have had several different incursions this year organised by our Wellbeing Officer, Adele. The children have been fortunate to have Bush Buddies come to visit with their animals, which was a great experience as the children were able to get up close with these animals they wouldn't normally see. The dentist paid us a visit and spoke to the children about healthy teeth and correct ways to brush to keep our teeth strong. The children loved their goody bags with new toothbrushes and toothpaste inside. We participated in Pyjama Day which raised around \$60 for children living in poverty. The children loved showing off their pyjamas and we celebrated with popcorn and a movie at rest time. Even the Educators had matching pyjamas; it was a lot of fun. We also had the police visit and talk to the children about how the police keep everyone safe. We learnt about all the things police officers carry on their uniforms and we even got to have a look inside the police car. The children were happy with the special police hats and books they were given.

During creche we have been getting to know the children's interests and are trying to provide resources and activities to extend them in their areas of interest. These included tools & construction; physical outdoor activities such as balancing, jumping, ball skills, skipping, running, climbing etc; dolls and Barbies; fine motor skill activities such as cutting, writing, stickers, beading, and puzzles; cars, trucks & roads; creative activities such as painting, drawing and craft. The sandpit is always popular, so we added to this area items such as large shovels, animals and water for children to get creative and use their imagination. Sensory play is a must amongst all the children so we have experimented with different sensory experiences. Children can use touch, feel and smell to meet these needs. Water beads, flour and cereal play, ice, rice, clay, and playdough have all been utilised. The children love these hands-on activities. We have also introduced some cooking activities so children become familiar with making something from scratch and the measuring, mixing, and baking process it takes to be able to eat the product. Muffins and chocolate snowballs have been the favourites.

Creche is a play-based service and as we have varying ages of children we do our best to cater for all children in their stage of growth and development. We try to incorporate two group times a day where we read a story and sing some of our favourite songs. (Dingle Dangle Scarecrow is everyone's favourite). Name recognition has been introduced at group times as well as group games and counting. The children do a brilliant job of concentrating, listening and focusing at group times which is a great stepping stone for kindy and school readiness.

We will be accepting any new enrolments for 2024 this term, so if there are families who require our creche service in these regions please spread the word.

**DEB TUIP**  
**Creche Team Leader**







# 2023 Committee

**CHAIRPERSON** Anna Nunn

**VICE CHAIRPERSON** Louise Kohler

**SECRETARY** Pamela Cuffe

**TREASURER** Keziah Henery

**BOARD MEMBERS** Jess Bell, Verity Ellery,  
Jill Greenfield, Rachael Hilder,  
Penny Rasheed, Franzsika  
Seeman

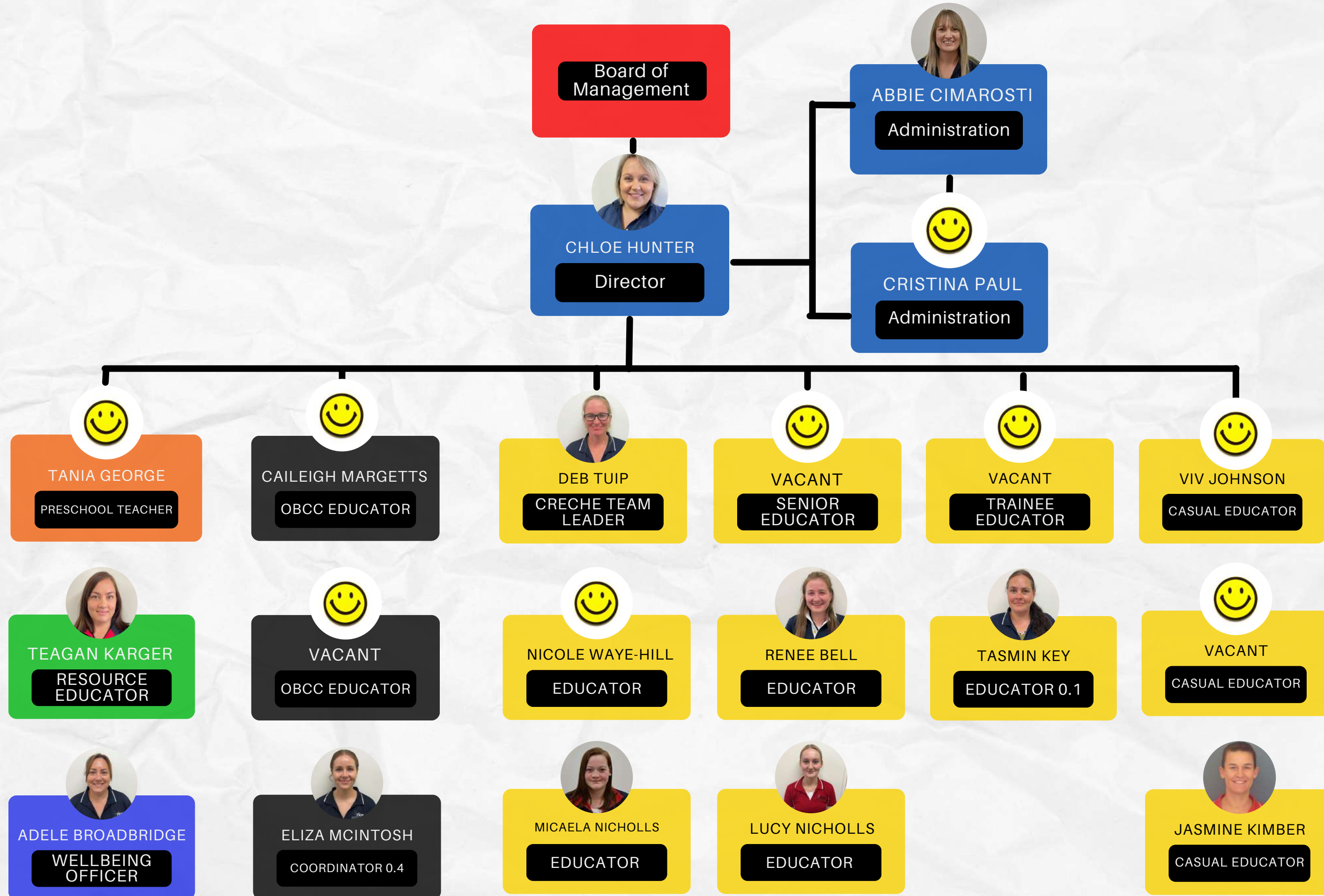




# 2023 Staff

<b>DIRECTOR</b>	Chloe Hunter
<b>ADMINISTRATION</b>	Abbie Cimarosti
<b>ADMIN ASSISTANT</b>	Cristina Paul
<b>WELLBEING OFFICER</b>	Adele Broadbridge
<b>PRESCHOOL TEACHER</b>	Tania George
<b>CRECHE TEAM LEADER</b>	Deborah Tuip
<b>RESOURCE EDUCATOR</b>	Teagan Karger
<b>EDUCATORS</b>	Renee Bell, Tasmin Key, Vivienne Johnson, Caileigh Margetts, Eliza McIntosh, Lucy Nicholls, Micaela Nicholls, Nicole Waye-Hill

# RICE Organisational Chart



# Funding

We would like to thank the following for providing RICE with the funding that allows us to deliver our unique service



Government of South Australia  
Department for Education

South Australian Government  
Department for Education



An Australian Government Initiative

Australian Government  
Department of Education, Skills  
and Employment

The BHP logo, consisting of the letters 'BHP' in a bold, orange, sans-serif font, centered within a white rectangular box.

**BHP**

BHP